



2025
HKTDC

VCOM PRODUCT CATALOG



Contents

Creator's Command Center

Wireless Screen Extender Series.....	2
SSD Enclosure.....	3
Microphone & Ambient light.....	4
Create a unique Studio.....	5

Next-Gen Workspace Series

High-speed Cable Series.....	7
SSD Enclosure.....	8
Next-Gen Workspace.....	10

Hot-sale Series

Ultra-High-Resolution Video Cable.....	12
USB4 Cable Series.....	13
USB -C HUB Series.....	15
Multi-screen TYPE C Docking.....	16
Smart Anti-loss Tag.....	16

UNLEASH YOUR **CREATIVE** FREEDOM





WIRELESS EXTENDER



Easy Screencast

DD543

4K
4K@30Hz

100W
PD 3.0



Wireless
range 15M



4K Type-C Wireless Screen Extender

Material: Plastic Case
Max Transmission Distance: 25M (open space without obstruction)
Max Resolution: 4K@30Hz
TX (Transmitter): USB-C to Host, USB-C PD100 Watts (Female)
RX (Receiver): HDMI to Display (requires USB-C Female 5V input)

Wireless Screen Extender Series

DD544

1080P
@60Hz



Wireless
range 50M



1080P Wireless Screen Extender

Material: Plastic Case
Max Transmission Distance: 50M (open space without obstruction)
Max Resolution: 1080P@60Hz
TX (Transmitter): HDMI to Host
RX (Receiver): HDMI to Display (requires USB-C Female 5V input)

*with Function Key Display
*Supports 8 transmitters (TX) to 1 receiver (RX)

DD545-TC

1080P
@60Hz



Wireless
range 50M



1080P Type-C Wireless Screen Extender

Material: Plastic Case
Max Transmission Distance: 50M (open space without obstruction)
Max Resolution: 1080P@60Hz
TX (Transmitter): USB-C to Host USB-C PD60Watts (Female)
RX (Receiver): HDMI to Display (requires USB-C Female 5V input)

*Supports 8 transmitters (TX) to 1 receiver (RX)

color: ○ ●

DD545-TH

1080P
@60Hz



Wireless
range 50M



1080P Wireless Screen Extender

Material: Plastic Case
Max Transmission Distance: 50M (open space without obstruction)
Max Resolution: 1080P@60Hz
TX (Transmitter): HDMI to Host
RX (Receiver): HDMI to Display (requires USB-C Female 5V input)

*Supports 8 transmitters (TX) to 1 receiver (RX)

color: ○ ●

DD546

1080P
@60Hz



Wireless
range 5M



1080P Wireless Screen Extender

Material: Plastic Case
Max Transmission Distance: 5M (open space without obstruction)
Max Resolution: 1080P@60Hz
RX (Receiver): HDMI to Display (requires USB-C Female 5V input)

WiFi: Dual-Band 5GHz/2.4GHz.
Protocol: Miracast, AirPlay.



Magnetic Enclosure M.2 SSD Enclosure

CU854N



TYPE C M TO PD+NVMe SSD Enclosure

Plastic case, support M.2 NVMe 2230
 PD: 100W, SSD transport 10Gbps
 Includes: 1x USB-C cable (compatible with iPhone 16/16 Pro or 16 Plus/Pro Max models) + 1x screwdriver



CU856N



Magnetic SSD Hard Drive

Material: Aluminum Case
 Storage Options: 256GB / 512GB / 1TB (Pre-installed SSD)

Built-in SSD – No need to purchase or manually install additional storage.
 Ultra-Low Heat Generation – Efficient design minimizes overheating risks.



CU853SN



SSD Magnetic Enclosure for M.2 NVMe and SATA Dual Protocol

Material: Aluminum Case
 Protocol: M.2 NVMe & M.2 SATA
 Compatibility: M Key & (M+B) Key 2230 SSD
 Transmission Speed: 10Gbps
 Max Capacity: 2TB
 Support System: Windows, Mac OS, Linux, Android
 Support UASP & Trim



The Desk Setup of the Creator



RGB Light Modes



Touch Button



No Distortion



Plugand Play

Microphone & Ambient light Series

M901-pink



RGB USB Microphone

Capsule Type: 014 Electret Condenser
Polar Pattern: Cardioid
Frequency Response: 35-20,000Hz
Sensitivity: 40 dBV/Pa
Signal-to-Noise Ratio: 75dB
Bit Depth: 16-bit
Sampling Rate: 48kHz
Compatible Systems:
Apple, Android, Windows, PSS, Linux
Pop Filter: Included
RGB Lighting: Available
Output/Input Interface: USB / TYPE-C
Power Source: USB Power (5V DC)
Material: ABS body, Metal stand base
Button Functions:
Touch button: Short press for mute, long press for noise reduction

M730



StreamGlow Ring Light with Stable Stand

Weight: Approximately 655g
Material:
Telescopic Tube: Aluminum Alloy
Plastic Parts: ABS + PC
Dimensions: 330 x 76 x 55mm
Retracted/Extended Length:
Retracted: 33.5cm
Extended: 230cm (including accessories)
Control Type: Bluetooth Remote Control (Bluetooth 5.2)
Remote Control Parameters:
Model: 401020 Polymer (Rechargeable)
Capacity: 55mAh
Voltage: 4.2V
Product Features:
Built-in 10-inch large ring light with 9 brightness levels and 3 color modes

M291



Wireless Headset

Bluetooth version : V5.0
Profile : A2DP/AVRCP/HSP/HFP
Battery : 180mAh
Driver Unit : 0.40mm
(changed unit better one/final sample)
Impedance : 32Ω
Sensitivity(SPL) : 110± 3dB
Frequency response : 20Hz-20 KHz



40mm AUX 5H IPH

M902-black



RGB USB Microphone

Polar Pattern: Cardioid
Frequency Response: 35-20,000Hz
Sensitivity: 40 dBV/Pa
Signal-to-Noise Ratio: 79dB
Sampling Rate: 192kHz / 48-bit
Max SPL: 110dB
Compatible Systems: Supports most mainstream OS and 99% of streaming, singing, and recording software
Pop Filter: Included
RGB Lighting: Available
Output/Input Interface: USB / TYPE-C
Power Source: USB Power (5V DC)
Material: ABS body, Metal stand base
Button Functions:
1. Touch button: short press for mute
2. RGB lighting mode adjustment
3. Adjustable microphone gain

M790



Desktop Ambient Light

LED Type: RGB5050 Dynamic LED Beads
LED Quantity: 20 LEDs
Illumination Angle : 180°
Voltage: 5V DC
Power Consumption: 3W
Control Methods : Inline control, remote control, sound activation
Cable Length: 1.6m
Lamp length and width: 3cm x 2cm (LxW)
Base Diameter: 9cm
Total Height : 24cm
Material: ABS, PC

M701S



RGB Headphones Stand with hub

USBAF*1 : USB2.0, 480Mbps
USBAF*1 only charging 5W
RGB light : 3 modes 7color with :USB cable *1
Custom Logo



10 Light Modes Touch Button Headphones Controller Holder

CUE602S



TYPE-CM TO CF+SD/TF4.0 Card

SD4.0: 236MB/S
TF4.0: 220MB/S
CF: 130M/S
GL3230S+LQFP128

CUE603S



TYPE-CM TO CF Express Type-B Card Reader

CF: 700M/S Transfer speed
RTL9210VB

DD605



USB 3.0 HDMI Capture Card

HDMI : Max input 4K@30Hz
Output:USB-A 3.0
Video output resolution: Max output can be 1080P@60Hz
Audio Output: 3.5MM 2.0 stereo output
HDMI Loop-out: 1080P@60Hz

M822



High-Speed Air Blower

Voltage: 7.4V
High speed brushless motor: 29MM
Maximum speed: 130,000 RPM
Wind pressure: 200g
Battery capacity: 3000MAH
Maximum endurance: 100min

CU540M



USB-C 40Gbps USB4 Cable

Material: Aluminum shell+Braid+Nickel plated plug
Length:1.2m
Data transfer: 40Gbps USB4
Current Rating: 5A
Power: Built in E-Marker Chip support 100W
USB Power Delivery :Support
Video: Single 8K@30Hz 5K@60Hz or Dual 4K@60Hz
Function: Charge, Data Transfer, Video, Audio
Compatible with Thunderbolt 4/3, USB3.2 & 3.1 Transfer protocol

CU580M



USB-C 80Gbps USB4 Cable

Material: Aluminum shell+Nickel Plated plug
Data transfer: 80Gbps USB4.
Power: Built in E-Marker Chip support 240W/100W.
Video: Dual screens at 8K@60Hz, Single screen at 16K@60Hz.
Compatible with Thunderbolt 4/3, USB3.2 & 3.1 Transfer protocol
Function: Charge, Data Transfer, Video, Audio

M950



4K STREAM WEBCAM

Product Specifications:
Resolution: 4K (3840x2160)
Sensor: 48MP
Frame Rate: 30FPS
Focus: AI Auto-Focus
Field of View (FOV): Adjustable
Microphone: AI Noise-Cancelling
Privacy Cover: Built-in
Zoom: 9x Optical Zoom
Interface: USB 3.0
Compatibility: Windows 98/2000/ME/XP/VISTA/Win7/8/10 (No Driver Required)
Cable Length: 1.5M
Material: ABS
Stand: Triangular Tripod Included
Remote Control: Included

M720



15W Wireless Charger Cell Phone Stand with Sound

Net Weight: 0.35KG
Wireless Charging Power: 15W
Input Voltage: DC 9V
Playback Time: 6 Hours
Standby Time: 600 Hours
Wireless Charging Distance: 3-8mm
Charging Port: Type-C
Material: ABS
Color Options: Black / White
Speaker Charging Time: 2 Hours
Battery Capacity: 1500mAh
Speaker Specifications: 52mm external magnet / 3W
Charging Current: 600mA
Stand Height: 160-194mm

[YOUR] NEXT-GEN WORKPLACE





CU543MR



USB-C 40Gbps USB4 Right Angle Cable

Coaxial line, Aluminum shell 1.2m
 Data transfer: 40Gbps USB4
 Current Rating: 5A
 Power: Built in E-Marker Chip support 240W
 USB Power Delivery :Support
 Video: Single 8K@30Hz 5K@60Hz or Dual 4K@60Hz
 Function: Charge, Data Transfer, Video, Audio
 Compatible with Thunderbolt 4/3, USB3.2 & 3.1 Transfer protocol

CG589M



USB-C 40Gbps USB4 Right Angle Cable

Product Type: Ultra Slim HDMI 2.0 Cable
 Resolution Support: 4K@60Hz
 Bandwidth: 18Gbps
 Supported Features: High-Speed Ethernet, 3D, ARC (Audio Return Channel), HDR Cable Structure: Ultra-thin design for enhanced portability and easy installation
 Wire Gauge: Ultra slim (specific diameter available upon request)
 Length: 1m, 2m, 3m
 Outer Jacket Material: PVC or TPE (eco-friendly option available)
 Connector Type: HDMI Type A (Gold-plated connectors for improved corrosion resistance and signal stability)
 Compatibility: Backward compatible with HDMI 1.4
 Supported Audio Formats: Dolby TrueHD, DTS-HD Master Audio, etc.

CU419-2.0



USB-C Magnetic Retractable Cable

2 versions available
 USB Version USB2.0
 Data Transfer Speed High-Speed (480 Mbps)
 USB Version USB3.2 Gen 2
 Data Transfer Speed SuperSpeed (10 Gbps)
 Cable Type USB-C to USB-C cable
 Connector Material: Nickel-plated
 Shielding Double shielded
 Compatibility USB 1.1, USB 2.0, USB 3.2,
 USB Power Delivery (USB PD)
 Charging Standards PD100W

CU419-3.0



Magnetic Retractable cable USB3.2 Gen 2

Connector Type USB Type C
 USB Version USB3.2 Gen 2
 Data Transfer Speed SuperSpeed+ (10 Gbps)
 Cable Type USB-C to USB-C cable
 Connector Material: Nickel-plated
 Shielding Double shielded
 Compatibility USB 1.1, USB 2.0, USB 3.2,
 USB Power Delivery (USB PD)
 Charging Standards PD100W



80Gbps

CU855SN-F



Fingerprint Encryption SSD Enclosure
 Transmission Speed: Up to 10Gbps
 SSD Compatibility: M Key and M+B Key SSDs
 Compatible with 2280/2242/2230 form factors
 Encrypted: Fingerprint Encryption
 Support capacity: 8TB
 Additional Features: Operating status display

CU850N



SSD Enclosure for M.2 NVMe Protocol
 Protocol: M.2 NVMe
 Compatibility: M Key & (M+B) Key 2280/2260/2242/2230 SSD
 Transmission Speed: 10Gbps
 Max Capacity: 4TB
 Support System: Windows, Mac OS, Linux, Android
 Support UASP & Trim: support

CU874N



USB4 SSD Enclosure for M.2 PCI-E NVMe Protocol 40G
 Protocol: M.2 NVMe
 Compatibility: M Key & (M+B) Key 2280/2260/2242/2230 SSD
 Transmission Speed: 40Gbps
 Max Capacity: 8TB
 Support System: Windows, Mac OS, Linux, Android
 Cable Type: Type CM to Type CM

SSD Enclosure Series

CU901SN



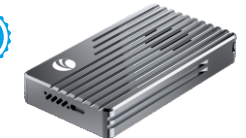
SSD Enclosure with 4 in 1 HUB
 10Gbps+USB-A3.2*2+1*USB-C-3.2 10G
 Include package and cable NVMe & SATA M.2 SSD Enclosure, USB 3.1 Gen 2
 M Key & B&M Key Hard Drive Adapter, Supports UASP for SSD Size 2260/2260/2242/2230

CU850SN



SSD Enclosure for M.2 NVMe and SATA Dual Protocol
 Protocol: M.2 NVMe & M.2 SATA
 Compatibility: M Key & (M+B) Key and M.2 SATA (M+B) Key 2280/2260/2242/2230 SSD
 Transmission Speed: 10Gbps & 6Gbps
 Max Capacity: 4TB
 Support System: Windows, Mac OS, Linux, Android
 Support UASP & Trim: support

CU875N



Thunderbolt 5 SSD Enclosure for M.2 PCI-E NVMe Protocol 80G
 Host Connectors: 1x USB Type-C
 Plug and Play: Yes
 Compatible Systems: Windows, Mac OS, Android
 Cable Type: Type-C to Type-C
 Data Transfer Speed: 80Gbps
 Compatibility: Thunderbolt 4/3, USB4
 Built-in Silent Fan: Yes

Make Data Entry & Calculations Easier

2 in 1 Wireless Calculator Numeric Keypad



34 Keys Layout



Win/Mac OS



Wireless



One-touch
Switching



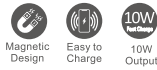
2.4G Dual-Mode



Battery Durability



M165



Magnetic 5-in-1 Wireless Charger

Product Specifications:
 Color: Gray
 Charging Protocol: QC3.0
 Magnetic Charging Support: Yes
 Output Current: 9V 3A
 Maximum Output Power: 10W
 Charger Type: Fast Charging
 Customization: Available
 Total Power: 20W
 Output Power: 10W
 Dimensions (L x W x H):
 8.5 cm x 8.5 cm x 10.8 cm
 Volume: 780.3 cm³
 Weight: 350g



CUE12-GRY



4 in 1 USB-C Hub

HDMI 4K/60Hz + HDMI 1080P/60Hz*2 + PD
 HDMI1: 3840*2160/60Hz; HDMI2: 1080P/60Hz; HDMI3: 1080P/60Hz
 System Compatibility: Window, MacOS, Android
 Fast Charging: PD3.0, Max 100W Power Adapter

CUE75



11 in 1 USB-C Hub

M904



Video Conference Microphone

Product Specifications:
 Voltage: 5V
 Weight: 1KG
 Power: 5W
 Cross-Border Export: No
 Connectivity: USB/Bluetooth/
 Wireless Adapter
 Dimensions: 130 x 130 x 35 mm
 Plug and Play: Driver-Free
 Battery Capacity: 3000mAh
 Battery Life: 8 hours



DM603



DeepSeek AI Voice Mouse

DPI Adjustable: 800/1000/1200/1600 DPI
 Connectivity: Wireless 2.4G + Bluetooth 5.0
 Charging Method: Type-C Interface,
 Lithium Battery Rechargeable
 Wireless Range: Approx. 10 meters
 Voltage/Current: 3.7V — 15mA
 Button Lifespan: 3 million clicks
 This name integrates the core features of the
 AI voice control, 3-mode connectivity, and
 highlights its uses in translation, writing,
 drawing, and table control, along with key
 technical specs like adjustable DPI and
 wireless range.



PA6512U



67W GaN Power Strip with LED Display Screen.

Input (AC): 250VAC, 50/60Hz, 16A
 USB Input: 100-240VAC, 50/60Hz, 1.15A Max
 AC Socket Output: 3680W Max

USB-C1 / USB-C2 Output
 5V=3A / 9V=3A / 15V=3A / 20V=3.35A (67W Max)
 USB-A Output
 5V=3A / 9V=2A / 12V=1.5A (18W Max)

Combined Output
 USB-C1 + USB-C2: 45W Max + 20W Max (65W Max)
 USB-C1 + USB-A: 45W Max + 18W Max
 USB-C2 + USB-A: 5V=2A + 5V=2A (10W Max)
 USB-C1 + USB-C2 + USB-A: 45W Max + 20W Max
 (65W Max)



DK513



BT & 2.4G 2-in-1 Dual-Mode Keyboard Calculator

Solutions: BK3633 QFN40
 Screen Driver: TM1621 SOP48
 Wireless: BT 5.0 + 2.4G dual mode
 Number of Keys: 34 keys
 Asynchronous or Not: Yes
 One-click Upload of Calculation Results
 Supported Systems:
 Windows, iOS, Android, Mac OS

color:



DK208



Ergonomic Wireless Silent Keyboard

2.4G BK Solution
 Wireless Receiving Distance: More than 10 meters
 Supports US/UK/KR/BR/JP Keyboard Layout
 Palm Wrapping Technology
 Battery: 2*AA Alkaline Batteries
 Keyboard Size: 456*230*53.2MM 100g



Ergonomic Wireless Silent Mouse

2.4G BK Solution + 30651C
 Wireless Receiving Distance: 10 meters
 Three-speed DPI: 800/1200/1600
 Silent left and right buttons
 Black silicone roller with ON/OFF switch
 Battery: 1*AA alkaline battery Key life 3 million times

Hot-sale Series



Ultra-High-Resolution Video Cable

CU490



16K
60Hz

8K
60Hz

40
Gbps

USB Type C to DP/M 16K Cable

Connector 1: USB C Male
Connector 2: Display port 2.1V Male

Bandwidth up to 40Gbps
Resolution: Max 16K@30Hz, 8K@60Hz,
4k@240/144/120/60/30Hz/
2K@240/144/120/60Hz,
1080P@360/240/120/60Hz
Aluminum Shell
Gold plated, black nylon braid

CG635



8K
60Hz

32
Gbps

HDCP
2.2

Display Port M/M 1.4V

Connector 1: DP A Male
Connector 2: DP A Male

Bandwidth:32Gbps
8K@60Hz/4K@144Hz/2K@240Hz
SupportHBR3, HDCP2.2/CEC/EDID
24K Gold plated Connector,
Silver Metal Shell, Black cotton net braid
Length:2m/10m

CG685F



8K
60Hz

32
Gbps

HDCP
2.2

Display port M/F 1.4V Extension

Connector 1: Mini DP Male
Connector 2: DP Female

Bandwidth:32Gbps
8K@60Hz/4K@120Hz
SupportHBR3, HDCP2.2/CEC/EDID
24K Gold plated Connector,
Silver Metal Shell, Black cotton net braid
Length:0.5m

CU423MV-4K



4K
60Hz

USB Type C to HDMI A/F
Connector 1: USB C Male
Connector 2: HDMI Female

Resolution: Max 4K UHD 3840*2160@60Hz
Aluminum Shell
Length:0.15m

CG655



16K
60Hz

8K
60Hz

80
Gbps

HDCP
2.2

16K DP Cable

DisplayPort 2.1 DP80 Cable, UHBR20,
FSDP (Full Size DP) Cable.

Bandwidth: 80Gbps, supports 16K@60Hz,
8K@60Hz, 4K@120Hz/240Hz, 2K@240Hz,
supports HBR3, HDCP2.2/CEC/EDID/MST,
gold-plated connectors, Metal Shell,
Black Cotton Net Braid
Backward compatible with DisplayPort 1.4
and 1.2 cables.

CG635F



8K
60Hz

32
Gbps

HDCP
2.2

Display port M/F 1.4V Extension

Connector 1: DP A Male
Connector 2: DP A Female

Bandwidth up to 32Gbps
8K@60Hz/4K@120Hz
Support HBR3, HDCP2.2/CEC/EDID
Gold plated, Silver Metal Shell,
Black cotton net braid

CU422MV-4K



4K
60Hz

USB Type C to DP F
Connector 1: USB C Male
Connector 2: DP Female

Resolution: Max 4K UHD 3840*2160@60Hz
Aluminum Shell
Length:0.15m

CU423MV-8K



8K
60Hz

USB Type C to HDMI A/F
Connector 1: USB C Male
Connector 2: HDMI Female

Input: USB type C Male
Output: HDMI type A Female
Resolution: Max 8K UHD 8K@60Hz/
4K@120Hz/2K@144Hz
Aluminum Shell
Length:0.15m

CG865



8K
60Hz

48
Gbps

HDCP
2.2

HDR

HDMI AM/AM 2.1V

Connector 1: HDMI A Male
Connector 2: HDMI A Male

Bandwidth up to 48Gbps, Ethernet,
3D eARC, HDCP 2.2, HDR, Support 8K@60Hz/
4K@120Hz/2K@144Hz
24K Gold plated Connector,
Silver Metal Shell, Black cotton net braid
Length:2m/10m

CG685



8K
60Hz

32
Gbps

HDCP
2.2

MiniDP M to DP M, 1.4V

Connector 1: Mini DP Male
Connector 2: DP Male

Bandwidth:32Gbps
8K@60Hz/4K@144Hz
Support HBR3, HDCP2.2/CEC/EDID
24K Gold plated Connector,
Silver Metal Shell, Black cotton net braid
Length:0.5m

CU422MV-8K



8K
60Hz

USB Type C to DP F
Connector 1: USB C Male
Connector 2: DP Female

Resolution:Max 8K UHD 8K@60Hz/
4K@120Hz/2K@144Hz
Aluminum Shell
Length:0.15m



8K VIDEO TRANSMISSION

USB-C

USB4 Cable



CU520M



USB-C 20Gbps USB4 Cable

Material: Aluminum shell+Braid+Nickel plated plug
 Length:2m
 Data transfer: 20Gbps USB4
 Current Rating: 5A
 Power: Built in E-Marker Chip support 100W
 USB Power Delivery :Support
 Video: Single 8K@30Hz 5K@60Hz or Dual 4K@60Hz
 Function: Charge, Data Transfer, Video, Audio
 Compatible with Thunderbolt 4/3, USB3.2 & 3.1 Transfer protocol



CU541M



USB-C 40Gbps USB4 Cable

Material: Aluminum shell+ Gold plated plug
 Length:1.2m
 Data transfer: 40Gbps USB4
 Current Rating: 5A
 Power: Built in E-Marker Chip support 240W
 USB Power Delivery :Support
 Video: Single 8K@60Hz 5K@60Hz or Dual 4K@60Hz
 Function: Charge, Data Transfer, Video, Audio
 Compatible with Thunderbolt 3, USB3.2 & 3.1 Transfer protocol



CU414



VR Cable USB 3.2 Gen1 CM to CM for Oculus,Copper

Cable Material: TPE
 Shell Material: TPE
 Length: 5M
 Connector: USB-C TO USB-C
 Conductor: Copper
 Function: Charging +5Gbps Data Transfer
 Application: Meta/Oculus Quest 1/2, Mobile Phone, Tablet, PC, Laptop, etc





USB-C

The Future of Connectivity



Color

CUE11S



5 in 1 USB -C Hub

4 x USB-C 3.2 Gen2
(10Gbps)
1 x PD 3.0 100W



* USB 3.1*4: Up to 10Gbps, only for data syncing, not support video output or charging

* PD 3.0 (20V5A,100W for Charge)

CUE18



7 in 1 USB -C Hub

1 x HDMI (4K@30Hz)
1 x USB-A 3.0 (5Gbps)
2 x USB-A 2.0 (480Mbps)
1 x SD 2.0
1 x TF 2.0
1 x PD 3.0 100W



* SD & TF2.0: Only 1 cards reading simultaneously

* PD 3.0 (20V5A,100W for Charge)

CUE39



7in 1 USB -C Hub

1 x HDMI (4K@60Hz)
1 x HDMI (1080P@60Hz)
2 x USB-A 3.0 (5Gbps)
1 x SD 2.0
1 x TF 2.0
1 x PD 3.0 100W



* HDMI-1:4K@60Hz(Required source DP1.4)

* HDMI-2:1080P@60Hz(Required Software Driver)

* PD 3.0 (20V5A, 100W for Charge)

* Windows MST (Extended or Mirror)

* MacOS OXP (Extended or Mirror)

CUE56



7 in 1 USB -C Hub

1 x HDMI (4K@60Hz)
1 x Gigabit LAN
2 x USB-A 3.0 (5Gbps)
1 x SD 3.0
1 x TF 3.0
1 x PD 3.0 100W



CUE15



3 in 1 USB -C Hub

1 x HDMI (4K@60Hz)
1 x USB-A 3.0 (5Gbps)
1 x PD 3.0 100W

* HDMI : Max 4K@60Hz
(Required source DP1.4)

* PD 3.0 (20V5A,100W for Charge)

CU450S



4 in 1 USB-C Hub

Side 1: USB Type C Male
Side 2: HDMI*2+USB2.0+PD

HDMI : 3840*2160@60Hz for separate output, 3840*2160@30Hz for simultaneous output with HDMI

USB: Up to 480Mbps, USB ports for data syncing
Support OTG function
USB-C(charge): PD3.0 100W



CUE67s



14 in 1 USB-C Hub

2*HDMI+DP simultaneous display maximum resolution 3840x2160/60Hz.

SD/TF2.0 single card single read.

System Compatibility:Support MAC OS, Windows10, Windows11, Android



CU4706



13 in 1 USB-C Hub

HDMI : 4K@60Hz for separate output, 4K@30Hz for simultaneous output with HDMI
DP: 4K@60Hz
USB3.0: Up to 5Gbps
USB-C USB2.0: 480Mbps
USB2.0: 480Mbps
RJ45: Up to 1000Mbps network
SD/TF: USB2.0
Audio Jack: TRS 3.5mm"



L-Shape Type C Connector

Smart Anti-loss Tag **Series**

NLT-10A



Smart Tag,4pc/pack

Anti-lost device
Battery: CR2032
Battery voltage: 3V
Standby time: 10-12 months (typical usage)
Buzzer: >75 dB
Wireless Range: > 40m (open line of sight)
APP: FindMy

S10



Smart Tag,4pc/pack

Anti-lost device
Battery:CR2032
Battery voltage: 3V
Standby time:1 year
Buzzer:90-110DB
Wireless Range:10-20m indoor,20-60m No barrier
APP: FindMy

S11



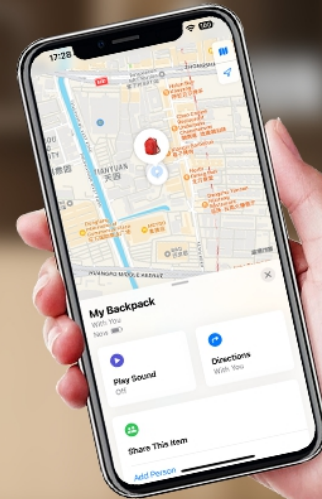
Name Card Anti-lost device

Battery:CR2016
Battery voltage: 3V
Standby time:2 year
Buzzer:90-110DB
Wireless Range:10-20m indoor,20-60m No barrier
APP: FindMy



Attach and Track Your Bag

Smart Anti-loss Tag





www.vcom.com.hk 

VCOM INTERNATIONAL LTD.

Head Quarter

>1/2F, Building D, Youke Business Center, Kexin Rd, Tangxia,
Tianhe District, Guangzhou City, Guangdong Province, China

Cable & Electronic Factory

>Xiaopenggang Industrial Zone, Longxi Town, Boluo District,
Huizhou City, Guangdong Province, China
Tel: +86-752-6873123 Fax: +86-752-6873155