

Specification:

Product model	CU850N	CU850SN
Applicable agreement	NVME PCI-E	NVME PCI-E & SATA (NGFF)
Transmission speed	10Gbps	10Gbps & 6Gbps
Hard disk interface	M.2 NVME M Key & (M+B) Key 2280/2260/2242/2230	M.2 NVME M Key & (M+B) Key and M.2 SATA (M+B) Key 2280/2260/2242/2230
Output interface	USB3.1 Type-C	USB3.1 Type-C
Support capacity		4TB
Support system	Windows/ Mac/ Linux/ Android	
Product size	102x28x12mm	

1

HOW TO INSTALL

1. Press and hold the part with "open" letter at one end of the hard disk box, and push the black bottom part with another hand.
2. Install the M.2 solid state drive on the base align the card slot point and push it gently



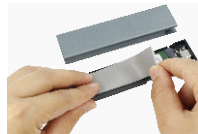
3. Press down the snap-fit of solid state hard disk to stick it.



4. Tear up the transparent film of the thermal conductive silicone sheet.



5. Attach the whole piece of thermal conductive silicone sheet on the hard disk box.



6. Put the hard disk back into the box and you are done the hard disk installation. (The side with words faces up)

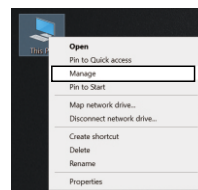


2

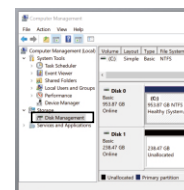
Matters needing attention:

The new SSD needs to enter disk management for initialization, otherwise the hard disk cartridge cannot read the hard disk.

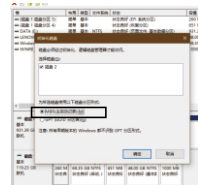
1. Right-click this computer and select Manage



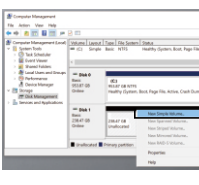
2. Open Disk Management, the system will pop up a prompt to initialize the disk



3. Initialize the disk and select MBR (Master Boot Record), and finally click OK



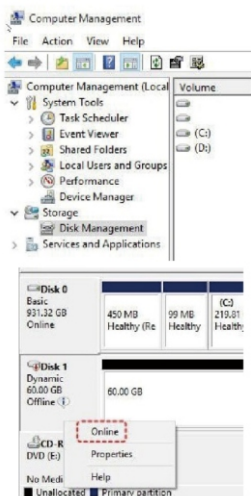
4. Right-click the identified empty hard disk, select New Simple Volume, and start partitioning



3

Drive is Connected but Missing in File Explorer:

Open Computer Management --> Storage Disk Management, then right-click on the disk marked as Offline and select Online on the drop-down menu.



4

Matters needing attention:

- Equipped with USB3.1 high performance chip, product input transmission speed 10Gbps. If connected to USB3.0 interface device, the device transmission rate will be affected.
- This product adopts standard USB 5V ± 5% power supply, and it will be damaged if it exceeds the standard voltage range, and cause product damage or potential safety hazard.
- When you need to remove the hard disk, please remove it safely on the computer before disconnecting from the computer. Do not forcibly remove the hard disk box and hard disk, so as to avoid data or disk error, damage or loss.
- Do not forcibly pull out the hard disk when copying data, so as to avoid file loss or hard disk damage.
- Please back up the hard disk data in advance before operating the hard disk partition or formatting, the company is not responsible for recovering the data in the hard disk, nor is it responsible for the loss caused by the loss of hard disk data.
- Do not drop, squeeze, impact or throw the product to avoid damaging the product.

Packing list

M.2 SSD ENCLOSURE	x1
Hard disk fixed buckle	x2
Manual	x1
USB A TO C Cable	x1
USB C TO C Cable	x1



5



M.2 SSD ENCLOSURE

User Manual

Dear users, thank you for choosing our products. In order to further improve, Please read this product manual carefully before using the product.